



**SEALING & STRIPING
RE-PAVE – RECONFIGURE – RE-STRIP
SUPPORTING DOCUMENTS & PLANS CHECKLIST**

SUPPORTING DOCUMENTS	
DUE AT SUBMITTAL	<input type="checkbox"/> Permit Application with property address, strap number, job name, job valuation, property owner, contact information for plan comments, and contractor* information (may list as "Out to Bid"). NOTE: If the owner is acting as his/her own contractor, Florida Statute 489.103(7) requires the owner to personally appear to sign the application. Notary service is provided free of charge. <input type="checkbox"/> One (1) set of drawings/plans which conform to the below checklist. <input type="checkbox"/> Payment of all Plan Review Fees (refer to Permit Application Fee Calculators on City's website www.cityftmyers.com) Visit www.cityftmyers.com/180/Electronic-Permits/ to learn about our ePlan process
DUE AT ISSUANCE	<input type="checkbox"/> Current Contractor Registration with The City of Fort Myers (separate registration form) <input type="checkbox"/> Proof of ownership if different from Public Records of Lee County (due to a recent sale of property). A recorded deed is acceptable proof of ownership.
DUE BEFORE 1ST INSP.	<input type="checkbox"/> Certified copy of the Notice of Commencement signed by property owner, lessee, or agent of either, and notarized, (on our form) for all jobs in excess of \$2,500 as required per Florida Statute 713.135(d).
SITE PLAN REQUIREMENTS	
<input type="checkbox"/> Provide statement of compliance on all plans to read substantially as follows: "These plans were prepared and shall comply with the following: - Sixth Edition (2017) Florida Building Code, <i>Building, Accessibility</i> - Sixth Edition (2017) Florida Fire Prevention Code - The City of Fort Myers Code of Ordinances - Florida Department of State, Administrative Code - 2017 Florida Statutes <input type="checkbox"/> Site Plan: a. Showing existing conditions to include adjacent streets, driveway entrances, building footprint with dimensions, loading zone striping, parking layout and dimensions, and access drive dimensions (if applicable) proposed area of re-paving, re-striping, parking space and access drive dimensions. b. Showing proposed area of improvements with associated details, such as area to be re-surfaced, material, thickness, etc. or new parking layout to include parking dimensions and parking calculations.	
PARKING CALCULATIONS & ACCESSIBILITY	
An accessible site shall comply with the U.S. Department of Justice ADA Compliance Brief, dated December of 2015. <input type="checkbox"/> At least one accessible route complying with the Florida Accessibility Code shall be provided within the boundary of the site from public transportation stops, accessible parking spaces, passenger loading zones if provided, and public streets or sidewalks, to an accessible building entrance. <input type="checkbox"/> At least one accessible route complying with the Florida Accessibility Code shall connect accessible buildings, accessible facilities, accessible elements, and accessible spaces that are on the same site. <input type="checkbox"/> All objects that protrude from surfaces or posts into circulation paths shall comply with Florida Accessibility Code <input type="checkbox"/> Ground surfaces along accessible routes and in accessible spaces shall comply with the Florida Accessibility Code. <input type="checkbox"/> Parking Spaces: If parking spaces are provided for self-parking by employees or visitors, or both, then accessible spaces complying with the Florida Accessibility Code shall be provided in each such parking area. Such spaces shall be designed and marked for exclusive use of those individuals who have a severe physical disability and have permanent or temporary mobility problems that substantially impair their ability to ambulate and who have been issued either a disabled parking permit under Section 316.1958 or 320.0848, Florida Statutes, or a license plate under Section 320.084, 320.0842, 320.0843, or 320.0845, Florida Statutes. The number of accessible parking spaces shall comply with the U.S. Department of Justice ADA Compliance Brief, dated 12/2015.	
ADDITIONAL INFORMATION	
<input type="checkbox"/> It is the owner-builder/contractor's responsibility to comply with Engineering Design Standards for reconfiguration and provide accessible spaces per the Florida Building Code. <input type="checkbox"/> Alterations to any ramps, exterior sidewalks, handrails, etc., may require a separate permit and submittal of drawings to be approved by the Building, Fire Prevention, Zoning and Engineering divisions <input type="checkbox"/> A separate permit shall be required for any work being proposed in the Right-of-Way, including driveway entrances, aprons, etc. <input type="checkbox"/> Refer to the City Standard Details and Specifications for standard and ADA accessible parking spaces (www.cityftmyers.com)	



Americans with Disabilities Act

ADA Compliance BRIEF:

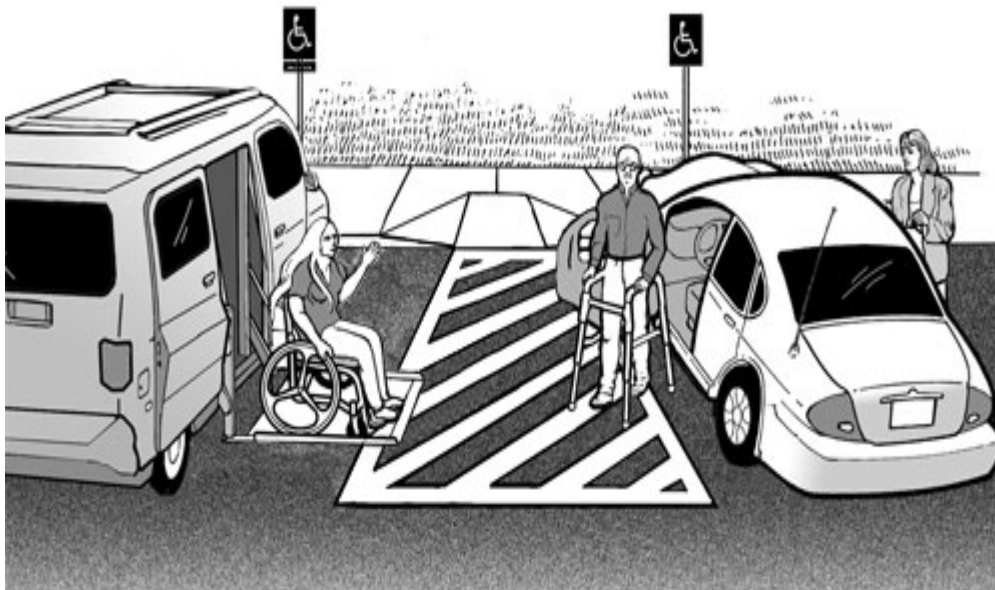
Restriping Parking Spaces

Accessible Parking Spaces

When a business or State or local government restripes parking spaces in a parking lot or parking structure (parking facilities), it must provide accessible parking spaces as required by the 2010 ADA Standards for Accessible Design (2010 Standards).

In addition, businesses or privately owned facilities that provide goods or services to the public have a continuing ADA obligation to remove barriers to access in existing parking facilities when it is readily achievable to do so. Because restriping is relatively inexpensive, it is readily achievable in most cases. State and local government facilities also have an ongoing ADA obligation to make their programs accessible, which can require providing accessible parking.

This compliance brief provides information about the features of accessible car and van parking spaces and how many accessible spaces are required when parking facilities are restriped.



One of six accessible parking spaces, but always at least one, must be van-accessible.

The required number of accessible parking spaces must be calculated separately for each parking facility, not calculated based on the total number of parking spaces provided on a site. One of six (or fraction of six) accessible parking spaces, but always at least one, must be van accessible.

Parking for hospital outpatient facilities, rehabilitation facilities, outpatient physical therapy facilities or residential facilities have substantially different requirements for accessibility (see 2010 Standards 208.2).

Minimum Number of Accessible Parking Spaces

2010 Standards (208.2)

Total Number of Parking Spaces Provided in Parking Facility (per facility)	(Column A) Minimum Number of Accessible Parking Spaces (car and van)	Minimum Number of Van-Accessible Parking Spaces (1 of six accessible spaces)
1 to 25	1	1
26 to 50	2	1
51 to 75	3	1
76 to 100	4	1
101 to 150	5	1
151 to 200	6	1
201 to 300	7	2
301 to 400	8	2
401 to 500	9	2
500 to 1000	2% of total parking provided in each lot or structure	1/6 of Column A*
1001 and over	20 plus 1 for each 100 over 1000	1/6 of Column A*

*one out of every 6 accessible spaces

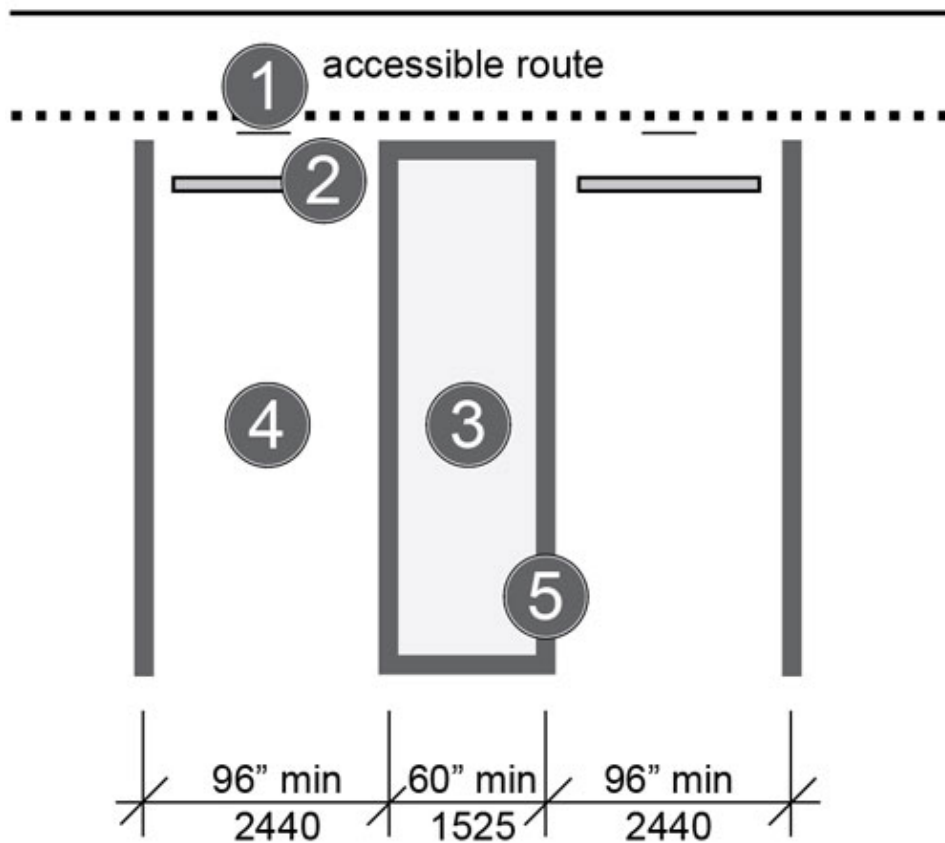
Location

Accessible parking spaces must be located on the shortest accessible route of travel to an accessible facility entrance. Where buildings have multiple accessible entrances with adjacent parking, the accessible parking spaces must be dispersed and located closest to the accessible entrances.

When accessible parking spaces are added in an existing parking lot or structure, locate the spaces on the most level ground close to the accessible entrance. An accessible route must always be provided from the accessible parking to the accessible entrance. An accessible route never has curbs or stairs, must be at least 3 feet wide, and has a firm, stable, slip-resistant surface. The slope along the accessible route should not be greater than 1:12 in the direction of travel.

Accessible parking spaces may be clustered in one or more facilities if equivalent or greater accessibility is provided in terms of distance from the accessible entrance, parking fees, and convenience. Van-accessible parking spaces located in parking garages may be clustered on one floor (to accommodate the 98-inch minimum vertical height requirement).

Features of Accessible Parking Spaces



**Accessible Parking Spaces with 60-inch Minimum Width
Access Aisle for Cars**

Notes:

1. Parking space identification sign with the international symbol of accessibility complying with 703.7.2.1 mounted 60 inches minimum above the ground surface measured to the bottom of the sign.

2. If the accessible route is located in front of the parking space, install wheel stops to keep vehicles from reducing the clear width of the accessible route below 36 inches.

3. Two parking spaces may share an access aisle except for angled parking spaces (see below).

Access aisle width is at least 60 inches, must be at the same level and the same length as the adjacent parking space(s) it serves, maximum slope in all directions is 1:48, and access aisle must connect to an accessible route to the building. Ramps must not extend into the access aisle.

4. Parking space shall be 96 inches wide minimum, marked to define the width, and maximum slope in all directions is 1:48.

5. Boundary of the access aisle must be clearly marked so as to discourage parking in it. (State or local laws may address the color and manner that parking spaces and access aisles are marked.)

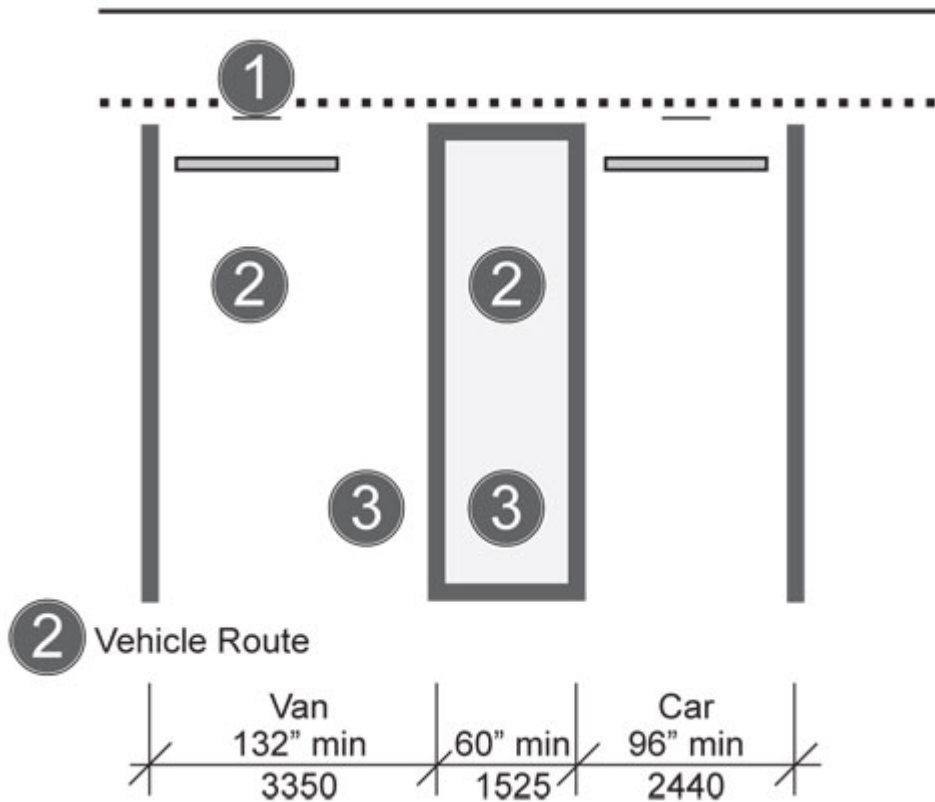
Additional Notes:

Where parking spaces are marked with lines, width measurements of parking spaces and access aisles are to centerlines, except for the end space which may include the full width of the line.

Access aisles may be located on either side of the parking space except for angled van parking spaces which must have access aisles located on the passenger side of the parking spaces.

Additional Features of Van-Accessible Parking Spaces

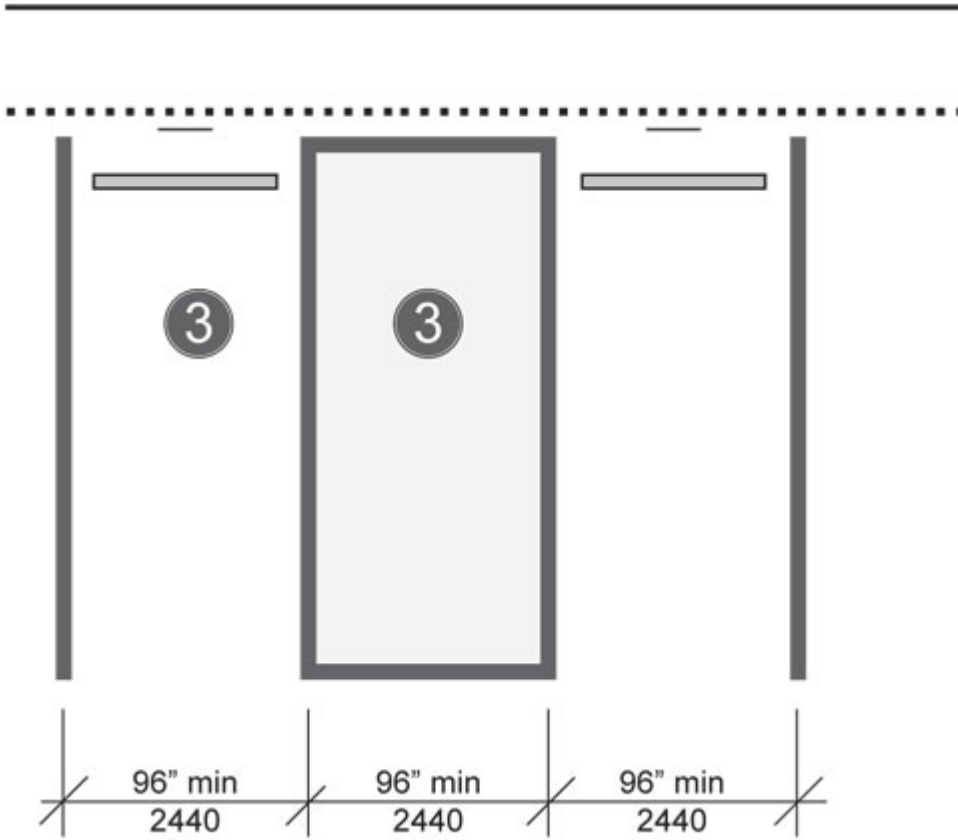
Van-accessible parking spaces incorporate the features of accessible parking spaces on the previous page and require the following additional features: a "van accessible" designation on the sign; different widths for the van parking space or the access aisle; and at least 98 inches of vertical clearance for the van parking space, access aisle, and vehicular route to and from the van-accessible space. The first image below shows a van-accessible space with a 60-inch minimum width access aisle. The second image shows a van-accessible space with a 96-inch minimum width access aisle. Both configurations are permitted and requirements for van-accessible signage and vertical clearance apply to both configurations.



Van-Accessible Parking Space with 60-inch Minimum Width Access Aisle

Notes (for illustrations above and below):

1. Parking space identification sign with the international symbol of accessibility and designation, "van accessible." Note, where four or fewer parking spaces are provided on a site, a sign identifying the accessible space, which must be van-accessible, is not required.
2. Vertical clearance of 98 inches minimum to accommodate van height at the vehicle parking space, the adjacent access aisle, and on the vehicular route to and from the van-accessible space.
3. Van parking space must be 132 inches wide minimum with an adjacent 60-inch wide minimum access aisle. A van parking space of 96 inches wide minimum with an adjacent 96-inch wide minimum access aisle is also permitted (see below).



Van-Accessible Parking Space with 96-inch Minimum Width Access Aisle



Where four or fewer parking spaces are provided on a site, signage identifying the van-accessible parking space is not required.

Resources

For more information about the ADA, please visit our website or call our toll-free number.

ADA Website

www.ADA.gov

To receive e-mail notifications when new ADA information is available, visit the ADA Website's home page and click the link near the bottom of the right-hand column.

ADA Information Line

800-514-0301 (Voice)

and

800-514-0383 (TTY)

Call Monday – Wednesday, Friday 9:30 a.m. – 5:30 p.m., Thursday 12:30 p.m. – 5:30 p.m. (Eastern Time) to speak with an ADA Specialist. Calls are confidential.

24 hours a day to order publications by mail.

For people with disabilities, this publication is available in alternate formats.

Reference:

2010 ADA Standards for Accessible Design
([available on ADA.gov](http://www.ADA.gov) and from the ADA Information Line)

Sections 208 & 502 Parking Spaces

Section 206 Accessible Route

Duplication of this document is encouraged.

December 2015

[PDF version of this document](#)